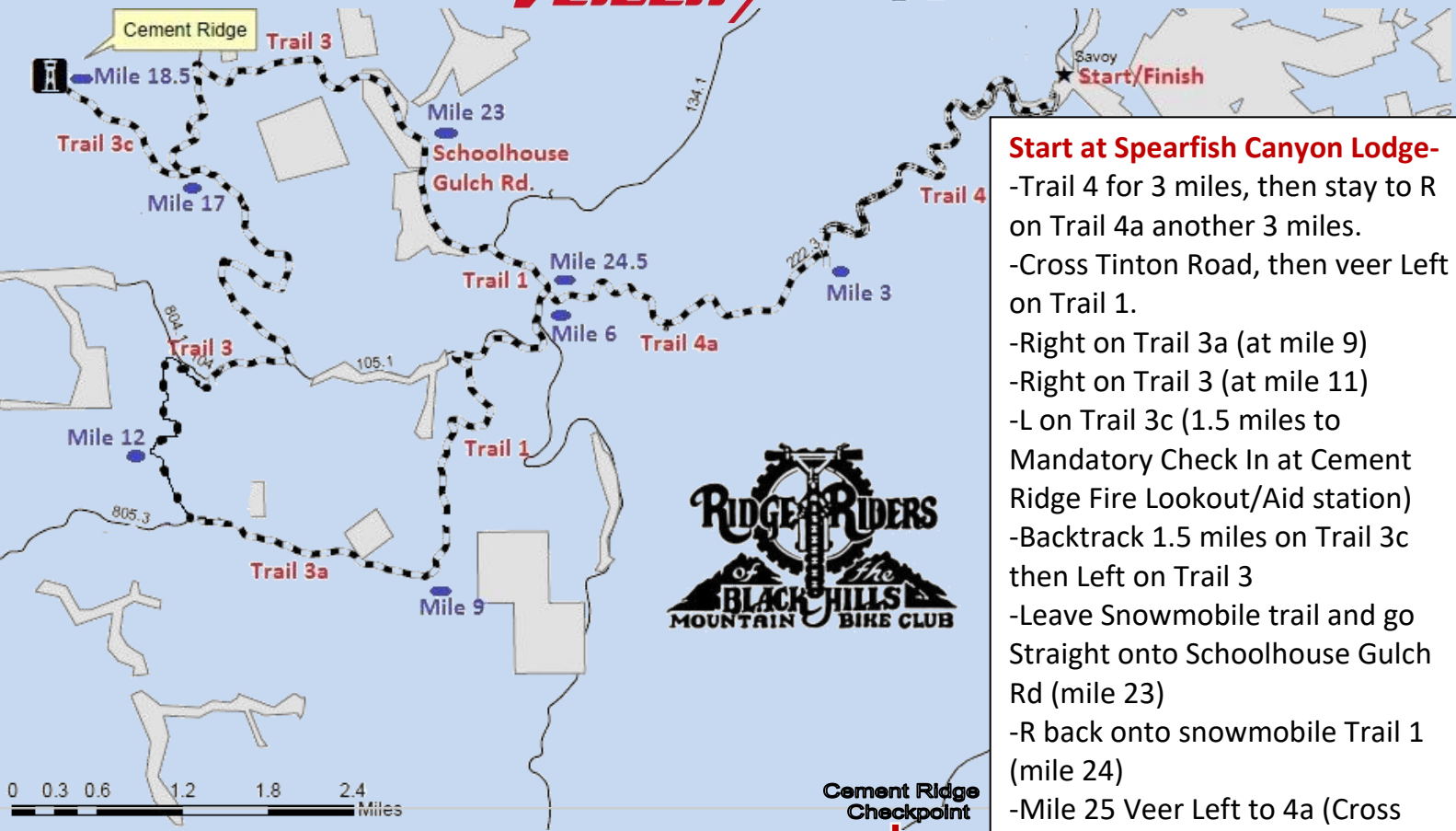




**ORTHOPEDICS AND SPORTS MEDICINE**  
MONUMENT HEALTH



PART OF  
HEADWATERS STUDIO  
SCREEN PRINTING & DESIGN  
RED LODGE, MONTANA



**Start at Spearfish Canyon Lodge-**  
 -Trail 4 for 3 miles, then stay to R on Trail 4a another 3 miles.  
 -Cross Tinton Road, then veer Left on Trail 1.  
 -Right on Trail 3a (at mile 9)  
 -Right on Trail 3 (at mile 11)  
 -L on Trail 3c (1.5 miles to Mandatory Check In at Cement Ridge Fire Lookout/Aid station)  
 -Backtrack 1.5 miles on Trail 3c then Left on Trail 3  
 -Leave Snowmobile trail and go Straight onto Schoolhouse Gulch Rd (mile 23)  
 -R back onto snowmobile Trail 1 (mile 24)  
 -Mile 25 Veer Left to 4a (Cross Tinton Road) then Trail 4 to Finish!

